

Property Video



**A CAMPUS BUILT TO
ATTRACT. ENGAGE. RETAIN.**

Justin Cope, SIOR
Principal
954 903 3701
justin.cope@avisonyoung.com

**AVISON
YOUNG**

Greg Martin
Principal, Managing Director -
Fort Lauderdale & Boca Raton
954 903 1815
greg.martin@avisonyoung.com



- Class A, three-story office building
- Efficient floor plans with minimal interior columns
- High ceilings and large windows for natural lighting
- 5,000 sf central amenity: The HUB @ Edison will serve as a conference center, break area, coffee bar, and fitness gym (including showers)
- Abundant surface parking: 5.5/1,000 sf
- 24/7 building access
- Building signage available - excellent visibility from Interstate 75
- Dynamic indoor and outdoor collaboration spaces

Justin Cope, SIOR

Principal

954 903 3701

justin.cope@avisonyoung.com

**AVISON
YOUNG**

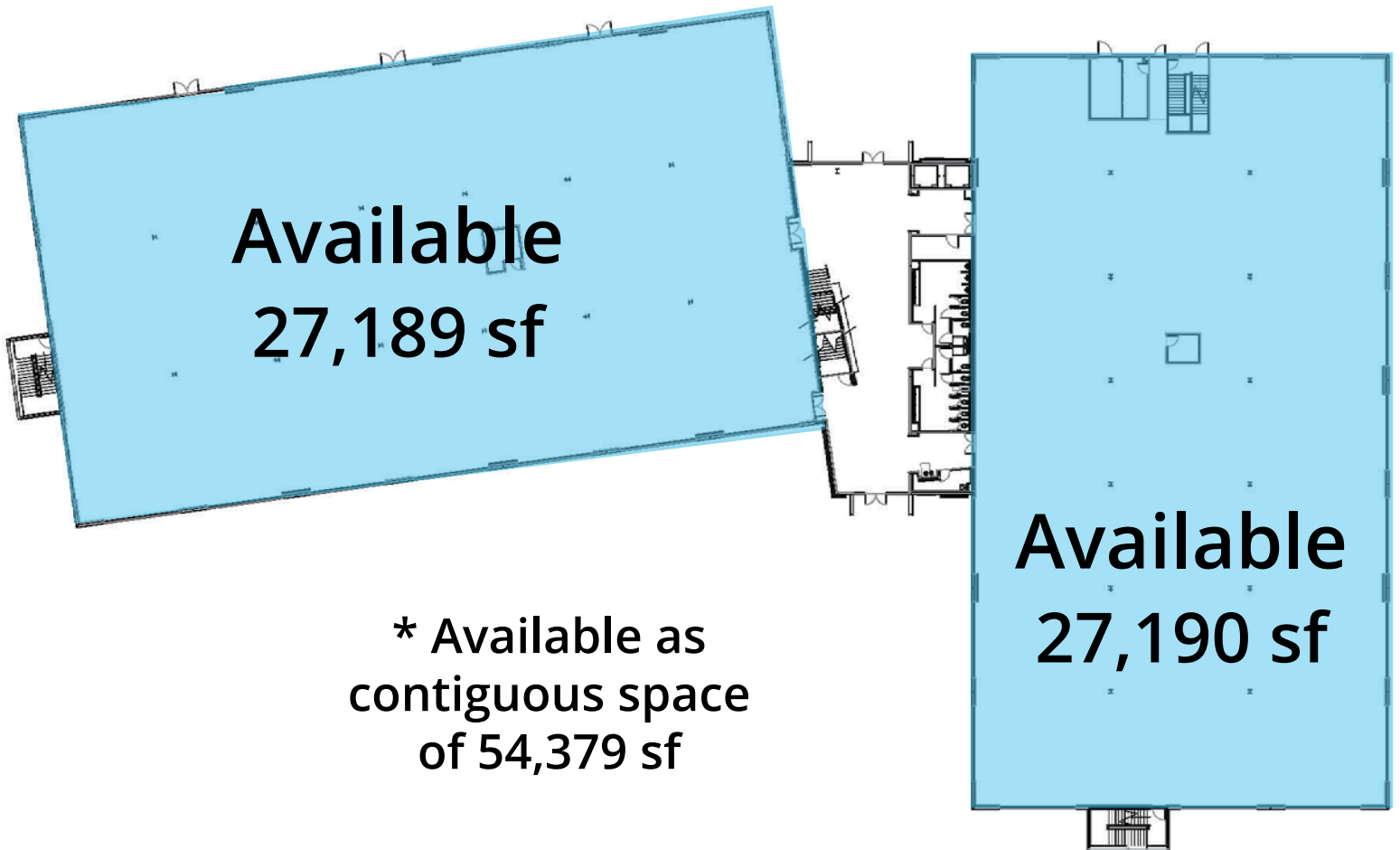
Greg Martin

Principal, Managing Director -
Fort Lauderdale & Boca Raton

954 903 1815

greg.martin@avisonyoung.com

First Floor



Justin Cope, SIOR

Principal

954 903 3701

justin.cope@avisonyoung.com

**AVISON
YOUNG**

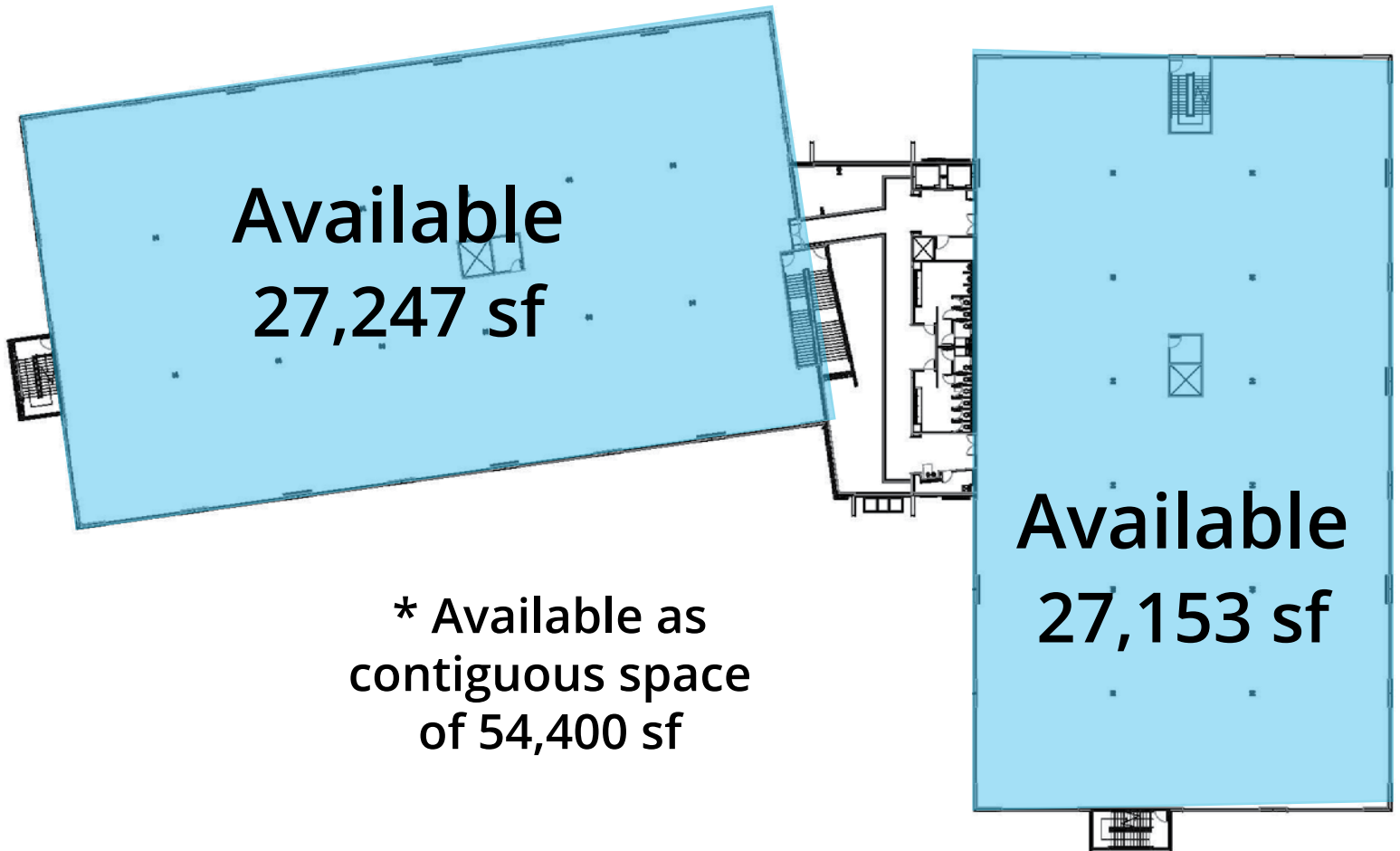
Greg Martin

Principal, Managing Director -
Fort Lauderdale & Boca Raton

954 903 1815

greg.martin@avisonyoung.com

Second Floor



Justin Cope, SIOR

Principal

954 903 3701

justin.cope@avisonyoung.com

**AVISON
YOUNG**

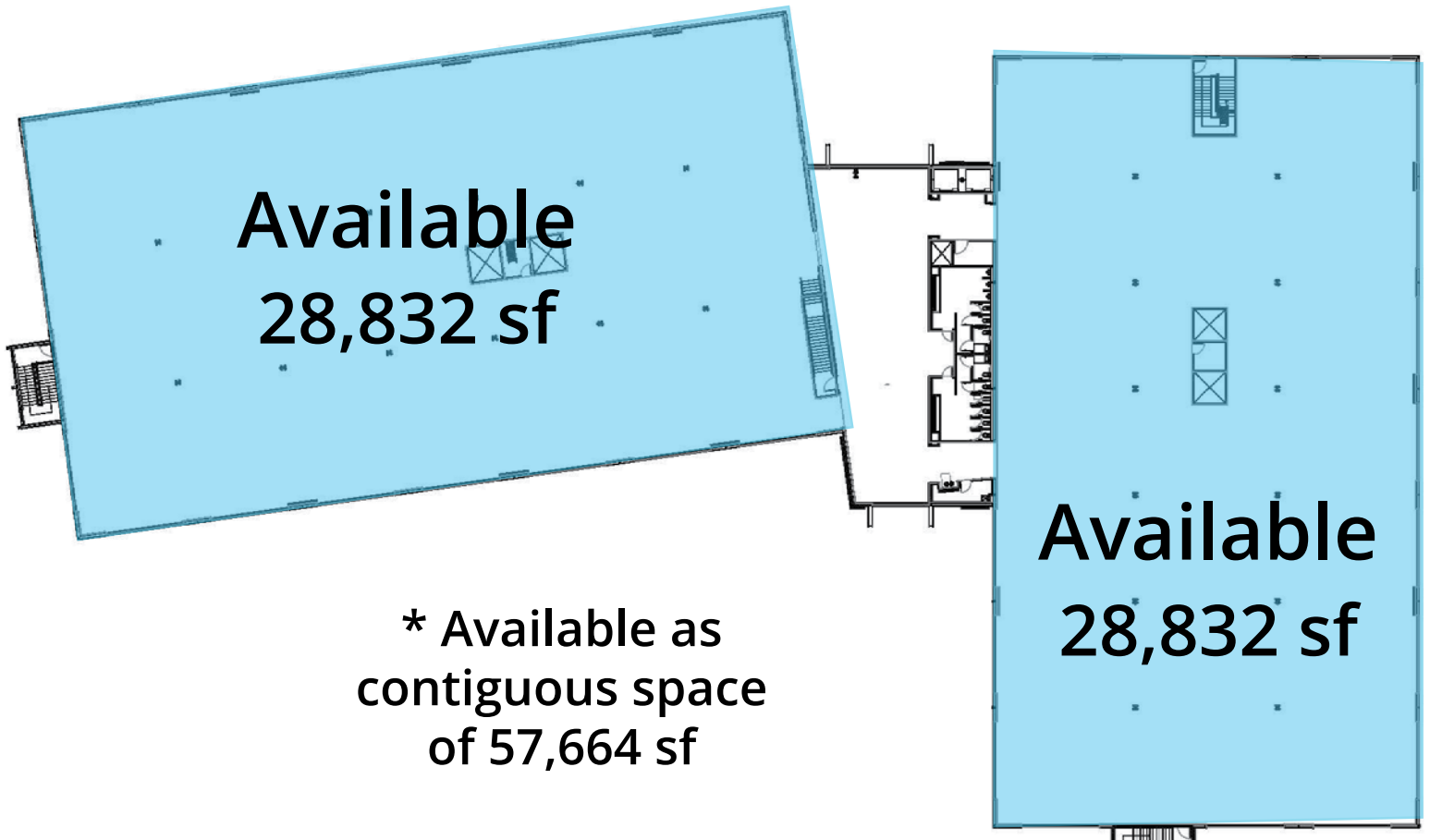
Greg Martin

Principal, Managing Director -
Fort Lauderdale & Boca Raton

954 903 1815

greg.martin@avisonyoung.com

Third Floor



* Available as
contiguous space
of 57,664 sf

Justin Cope, SIOR

Principal

954 903 3701

justin.cope@avisonyoung.com

**AVISON
YOUNG**

Greg Martin

Principal, Managing Director -
Fort Lauderdale & Boca Raton

954 903 1815

greg.martin@avisonyoung.com

TE
THE EDISON
PEMBROKE PINES

PHASE II - EST DELIVERY 2024
1400 SW 145TH AVENUE, PEMBROKE PINES, FL



Outdoor Collaboration Area



Justin Cope, SIOR

Principal

954 903 3701

justin.cope@avisonyoung.com

**AVISON
YOUNG**

Greg Martin

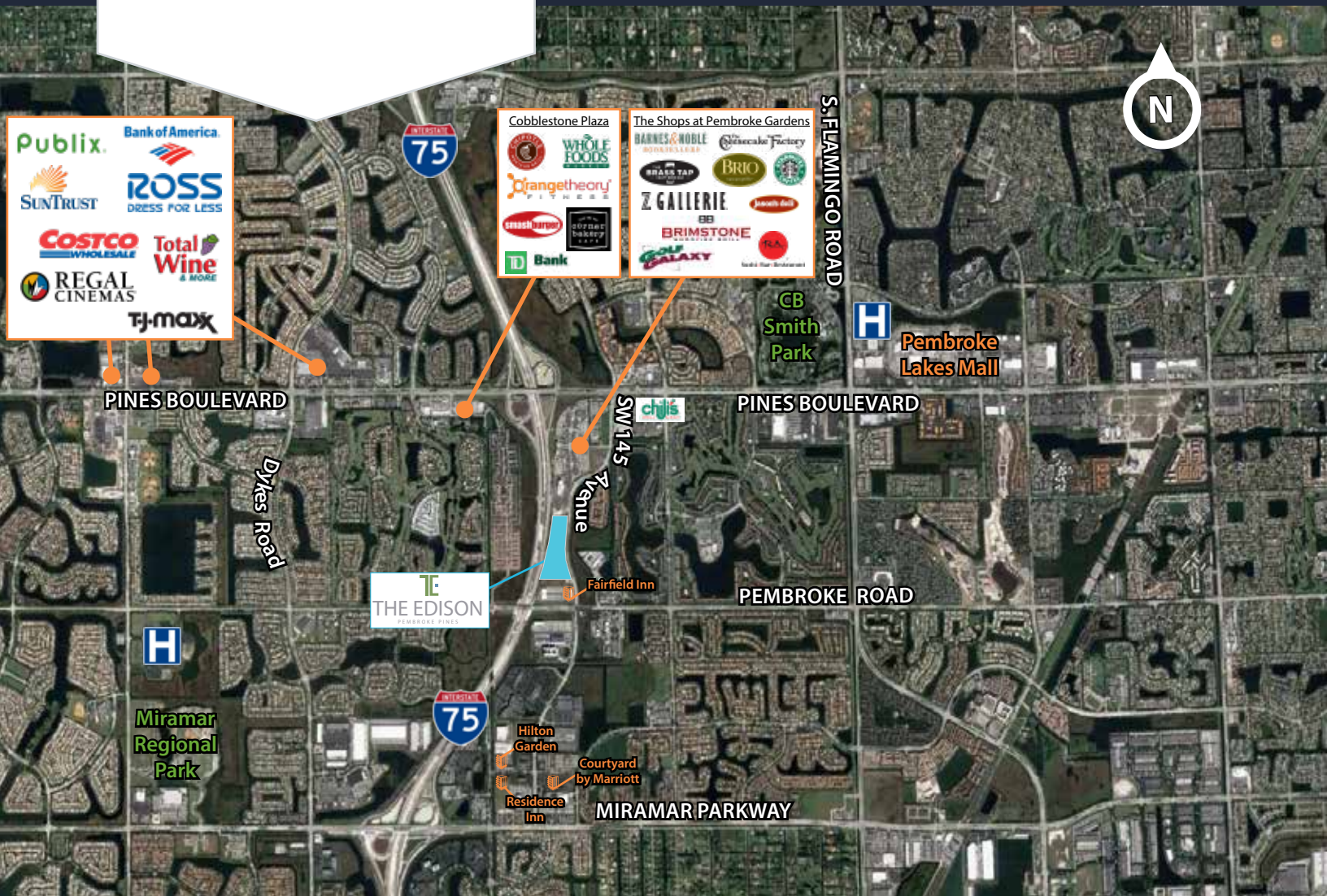
Principal, Managing Director -
Fort Lauderdale & Boca Raton

954 903 1815

greg.martin@avisonyoung.com

TE
THE EDISON
 PEMBROKE PINES

PHASE II - EST DELIVERY 2024
 1400 SW 145TH AVENUE, PEMBROKE PINES, FL



Justin Cope, SIOR

Principal
954 903 3701
justin.cope@avisonyoung.com



Greg Martin

Principal, Managing Director -
 Fort Lauderdale & Boca Raton
954 903 1815
greg.martin@avisonyoung.com



Justin Cope, SIOR

Principal

954 903 3701

justin.cope@avisonyoung.com

**AVISON
YOUNG**

Greg Martin

Principal, Managing Director -
Fort Lauderdale & Boca Raton

954 903 1815

greg.martin@avisonyoung.com